

+05.97 Next Line Trac No. 3420

1308.7  
B  
II

PROFILE OF SOUTH CURB LINE  
WILSON ST  
SEVENTH STREET  
ON  
FROM  
RAMONA AVE TO FLORES ST

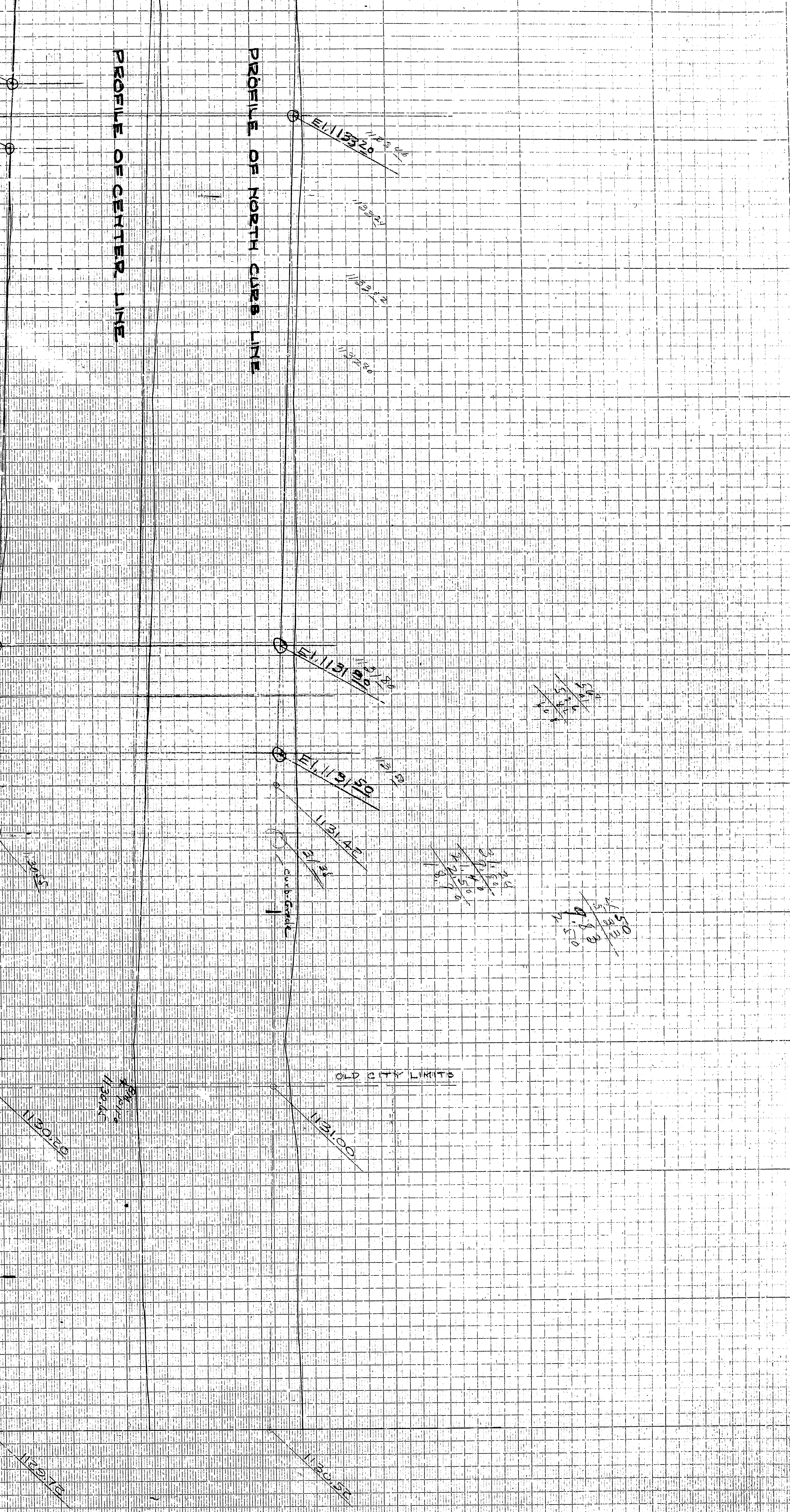
DATA  
No. 1000  
Scale 1" = 10'  
Date 1/1/20

1308.7  
B  
II  
9  
7  
5  
4  
3  
2  
1  
0

+08.97 WPL  
+6.72 MUSCOTT ST  
+26.47 EBL  
+67.05 OLD CITY LIMITS  
E of Ramona Ave.  
NOTE: Grade of Seventh St from Mt Vernon Ave. to Old City Limits established by Ordinance No. 980.

PROFILE OF CENTER LINE

PROFILE OF NORTH CURB LINE



113.170

113.320

113.000

113.190

113.250

112.020

113.100

112.210

112.520

1173.72  
161.75  
1308.97

Survey made  
by  
1/1/20

113.100  
113.110  
113.120  
113.130  
113.140  
113.150  
113.160  
113.170  
113.180  
113.190  
113.200  
113.210  
113.220  
113.230  
113.240  
113.250  
113.260  
113.270  
113.280  
113.290  
113.300  
113.310  
113.320  
113.330  
113.340  
113.350  
113.360  
113.370  
113.380  
113.390  
113.400  
113.410  
113.420  
113.430  
113.440  
113.450  
113.460  
113.470  
113.480  
113.490  
113.500

+05.97 Next Line Trad No. 3420

1308.7  
B  
II

+18.97  
+18.97  
+18.97

9

7

+08.97 WPL  
+6.72 MUSCOTT ST  
+26.47 EBL

5

4

3

+67.05

2

1

0

SEVENTH STREET  
ON  
FROM  
RAMONA AVE TO FLORES ST

GRADES

PROFILE OF SOUTH CURB LINE  
ELEVATIONS: EL 1132.90, EL 1132.48, EL 1132.48

PROFILE OF CENTER LINE

PROFILE OF NORTH CURB LINE  
ELEVATIONS: EL 1133.20, EL 1133.20, EL 1132.21, EL 1131.22, EL 1130.20

NOTICE: THE GRADES SHOWN ON THIS SHEET ARE THE GRADES OF THE PROPOSED SEWER MAINS AND ARE NOT TO BE CONSIDERED AS THE GRADES OF THE EXISTING SEWER MAINS.

NOTE: Grade of Seventh St from Mt Vernon Ave. to Old City Limits established by Ordinance No. 980.

OLD CITY LIMITS

OLD CITY LIMITS

E of Ramona Ave.

1173.72  
1047.75  
1308.97

Survey made  
March 1, 1905  
by  
J. H. ...

1131.50  
1131.48  
1131.48  
1131.48  
1131.48  
1131.48  
1131.48

1131.48  
1131.48  
1131.48  
1131.48  
1131.48  
1131.48  
1131.48

1130.50  
1130.50  
1130.50

1131.50  
1131.50  
1131.50

1130.50  
1130.50  
1130.50

1131.50  
1131.50  
1131.50